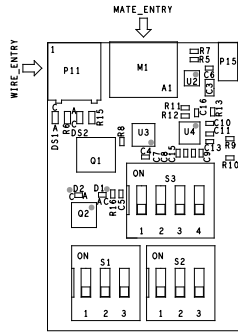

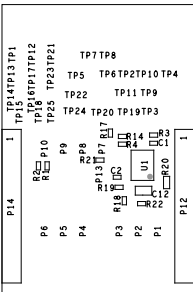
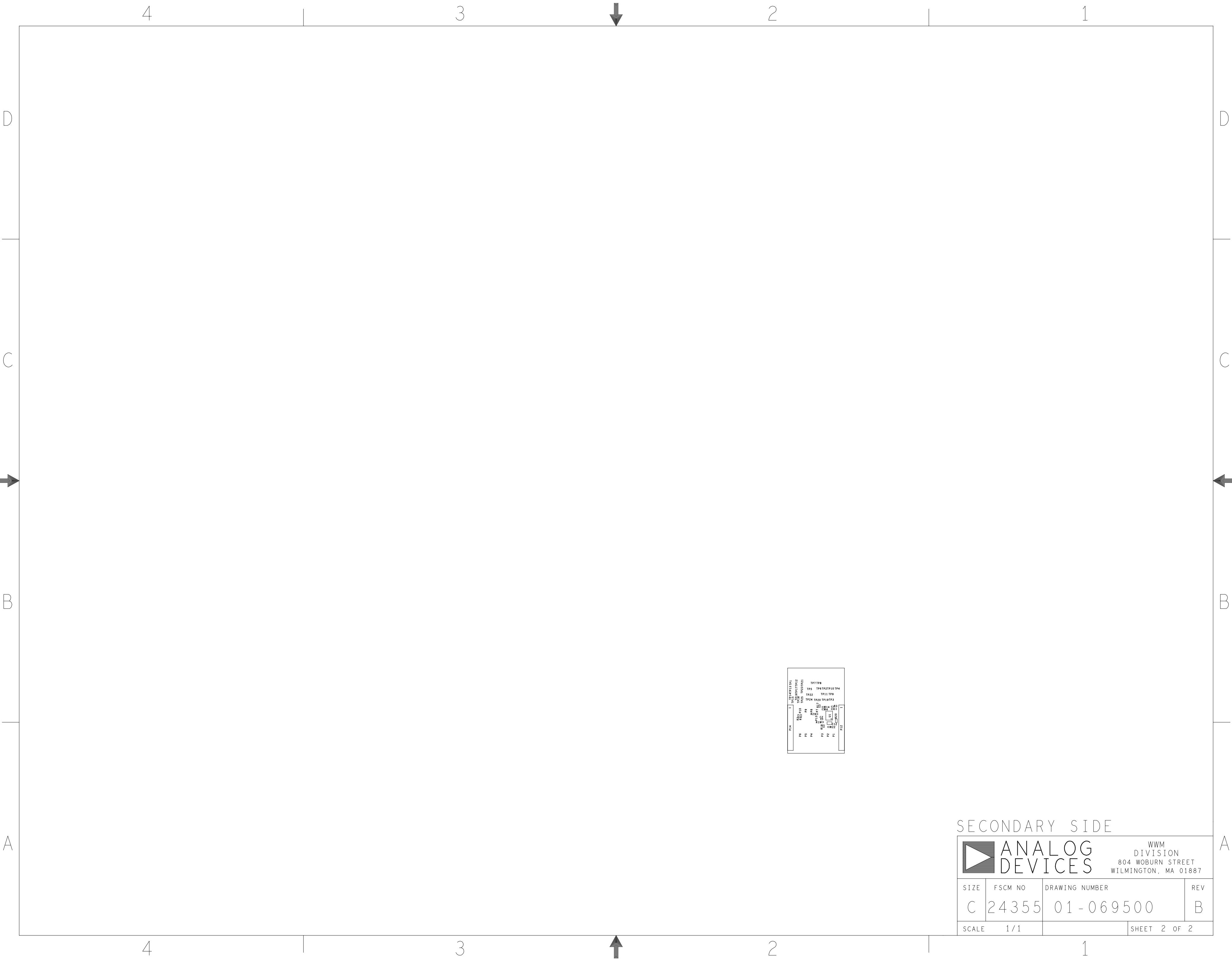


| REVISIONS | | | |
|-----------|-----------------|---------|-----------|
| REV | DESCRIPTION | DATE | APPROVED |
| A | INITIAL RELEASE | 14APR21 | F. LUPAS |
| B | ECR-113805 | 25MAY23 | V. BELECA |




PRIMARY SIDE

| | | | | | | | | | |
|---|-------------------------------------|--|---------|-------|---|---------|----------------|--------------|--|
| UNLESS OTHERWISE SPECIFIED DIMENSIONS ARE IN INCHES TOLERANCES DECIMALS FRACTIONS ANGLES .XX -.010 --1/32 -- 2 .XXX -.005 .XXXX -.0050 | APPROVAL | | DATE | | <div><div></div><div><div>ANALOG DEVICES</div></div></div> <div>GLOBAL OPERATION & TECHNOLOGY 804 WOBURN STREET WILMINGTON, MA 01887</div> | | | | |
| | TEMPLATE ENGINEER BILLY PHILLIPS | | 14APR21 | | | | | | |
| | HARDWARE SERVICES BOB MACDONALD | | 14APR21 | | | | | | |
| | HARDWARE SYSTEMS DAVE WILLIAMS | | 14APR21 | | | | | | |
| MATERIAL | TEST ENGINEER NA | | NA | | TITLE ASSEMBLY EVAL - CN0581-EBZ CUSTOMER EVALUATION Z | | | | |
| | COMPONENT ENGINEER ADGT LIBRARY | | 14APR21 | | | | | | |
| | TEST PROCESS NA | | NA | | | | | | |
| | HARDWARE RELEASE NA | | NA | | | | | | |
| FINISH | DESIGNER FILIP LUPAS | | 14APR21 | | SIZE | FSCM NO | DRAWING NUMBER | REV | |
| | PTD ENGINEER FILIP LUPAS | | 14APR21 | | | | | | |
| | CHECKER NA | | NA | | | | | | |
| DO NOT SCALE DWG | | | | SCALE | | 1 / 1 | | SHEET 1 OF 2 | |



SECONDARY SIDE

| | | | | | |
|---|---------|-------------------|--|--|-----|
|  | | ANALOG DEVICES | | WWM DIVISION 804 WOBURN STREET WILMINGTON, MA 01887 | |
| SIZE | FSCM NO | DRAWING NUMBER | | | REV |
| C | 24355 | 01 - 069500 | | | B |
| SCALE 1 / 1 | | | | SHEET 2 OF 2 | |